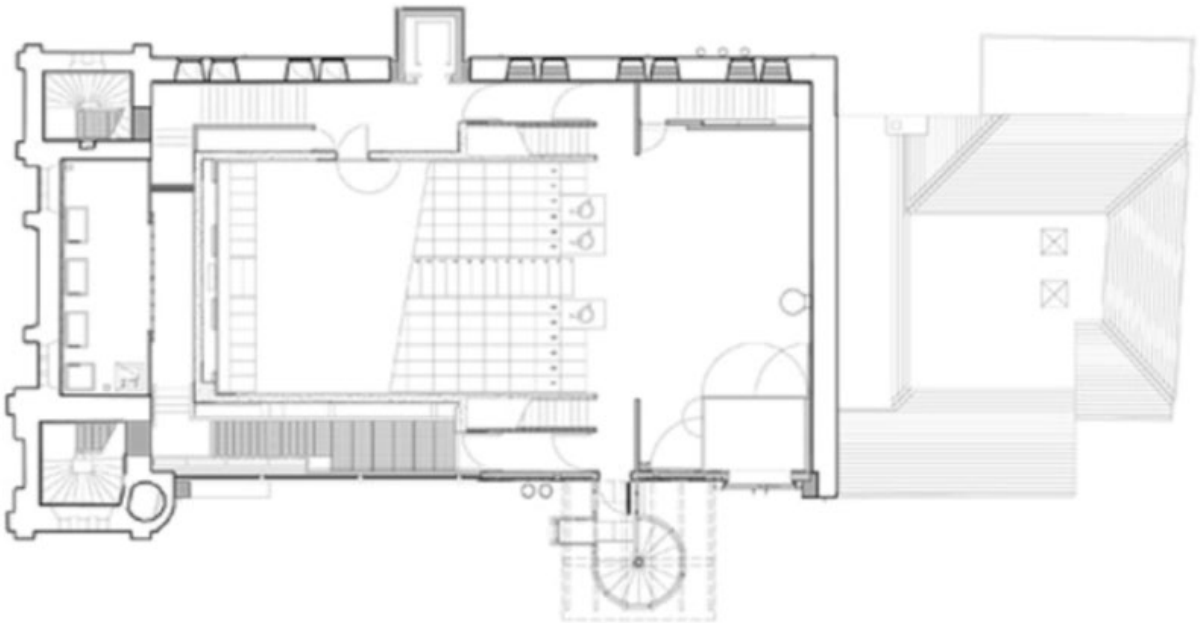
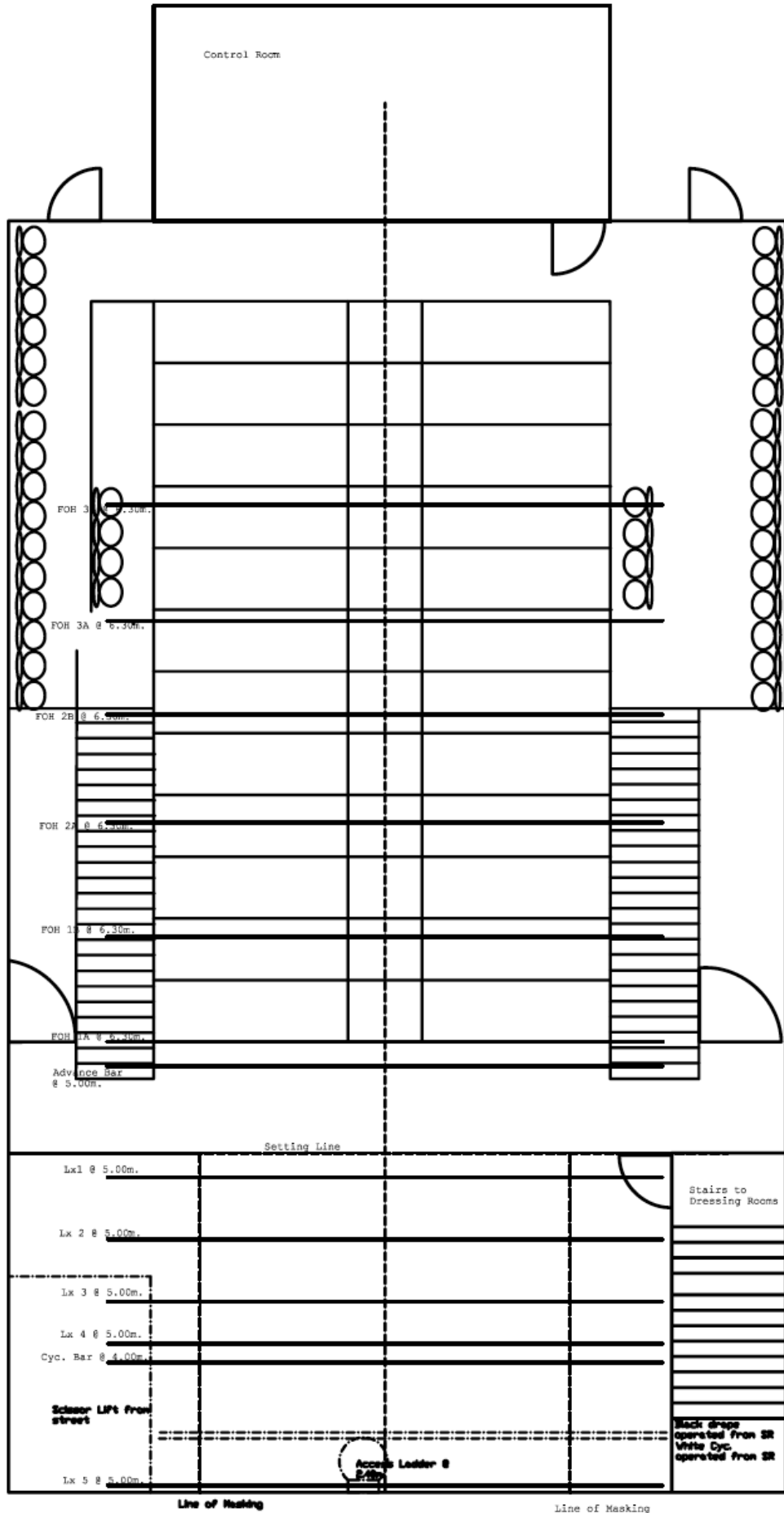


Peebles Eastgate Arts Centre







Technical

The Eastgate auditorium has the following specifications:

Seating

o Retractable raked seating for 156, with a further 20 seats behind o 56 gallery seats around the sides, some with restricted viewso Space at the front of the stalls for up to six wheelchairso Floor space (with seats retracted) including stage 17.5m x 7.25mo Height to ceiling 7.75m, and height to lighting gantry 6.25m

Stage

o Stage at same level as auditorium flooro Stage proscenium opening 7.65m (6m between soft masking)

- Stage proscenium to back wall 5.5m (4.5m to crossover masking)
- o Stage from centre line to left wall 6.1m (3m to soft masking)
- o Stage from centre line to right wall 4.65m (3m to soft masking)
- o Height of fixed grid 5m (4.5m clearance below lighting gantry)
- o Platform lift, 2.1m x 3.1m, forms part of up stage left wing

Equipment

o No flying system availableo Fixed grid 5m above stage with lighting bars at approximately 1m intervalso 150kg safe working load per lighting baro 3 FOH lighting bridges with cat walk access from aboveo access to cat walk via ladder in control room / rear stage

o ETC Express 125 control console in control / projection room at rear of auditoriumo 92 x 3kw dimmers and 6 x 3kw relayso patch: 92 x 15amp pairs and 6 x 15amp independent mainso 3 x 12 way lighting bridges, and 2 x 6 way side bars above auditoriumo 5 x 12 way lighting bars on fixed grid 5m above stageo 4 x 4 way stage boxes at floor levelo 16 x switched 13amp independent circuits above stage and auditoriumo 16 x DMX lines to stage and auditorium

o 8 x ETC S4 zoom profile lantern 15-30 degrees permanently rigged on FOH gantryo 8 x ETC S4 zoom profile lantern 25-50 degreeso 4 x Iris for S4 zoom profileso 16 x ETC S4 PAR EA reflectors with 4 lens set (VNSP, NSP, MFL, WFL)o 20 x Selecon 1200 fresnel lanterns and barn doorso 12 x Selecon Acclaim fresnel lanterns and barn doorso 12 x Selecon Acclaim zoomspots 24-44 degreeso 12 x Selecon Acclaim 1-comp floodlightso 4 x lighting standso 4 x bench standso all rigging and

focusing above stage is from Genie powered access platform

- o Allen and Heath GL2200 mixing console in control / projection roomo 2 x Tascam MD-301 mkII minidisk player / recorderso 1 x Tascam CDRW700 CD player / recordero 1 x Tascam CD-A500 cassette / CD playero 1 x Lexicon MPX110 effects processoro 2 x BSS FCS966 graphic equalisers (1 x FOH, 1 x monitors, 1 x side fills)o 3 x XS700 power amplifiers (1 x FOH, 1 x monitors, 1 x side fills)

- o 16 x XLR3 mic tie lines between stage and control roomo 2 x Shure SM58 micso 2 x AKG SE300B micso 1 x AKG C1000S condensos micso 2 x Beyer GST400 mic boom standso 1 x AKG S11 table mic stando 2 x Sennheiser lapel radio micso 2 x Sennheiser handheld radio micso 3 x pairs EV SX300 speakers (2 x FOH, 1 x side fills)o 4 x WPL1 monitor speakers

- o Metro Audio comms master station in control roomo 6 x Metro Audio comms beltacks

- o Flying screen (rear stage) 7m x 3m on electric winches, with fixed speakerso 1 x FP 25 E 35mm projectoro 1 x spooling towero 130mm HD lenso 90 mm HD lenso 75mm HD lenso 1 x R-5000 electric rewinder 5000m, spools and splicer

- o 3 x QSC 1602 PLX 2 x 600 power ampso 3 x Martin Audio WT2 screen speakerso 1 x Martin Audio S18 sub base speakero 8 x Martin Audio effect-surround speakers

- o Red velour soft proscenium legs and bordero Red velour house tabs available on draw track (hung on request)o Black cloth on wipe track to form crossover 4.5m up stage of house tabso White filled cloth cyclorama on wipe track down stage of black clotho 6 x black legs in fixed positions on swivel mountings, 3 on each side of stageo 3 x black borderso Genie access platformo Stage has permanent black vinyl dance floor covering

- o Free standing lecterno Upright rehearsal pianoo Access to Steinway Grand by prior arrangement