

GALASHIELS MACARTS

March 2016 Mick Andrew



General Information

Address: MacArts, Bridge Street, Galashiels, Selkirkshire TD1 1SP
01896 756852. Venue is staffed.

<http://www.macarts.scot>

- Venue is in town centre at corner of Bridge St & Sime Place on north side of road. Car parking on street.
- Built as church in 1885, revamped into Council Educational Centre (St. Andrew's Arts Centre) in 1970 and converted to Arts Centre in 2014.
- Capacity 190 padded, stacking, non-interlocking chairs. Up to 250 standing.
- Mobile reception excellent.
- Galashiels has all services.

Hall Details

- Hall Dimensions: 6.71M (22') wide x 10.95M (35'11") from stage front to balcony. Height above to FOH LX truss approx 5.1M (16'9"). Smaller Hall (Art Room) also available.
- Stage: 6.12M (20'1") wide x 4.12M (13'6") deep. Height of stage 0.61M (2'), height above to LX truss approx 4.5M (14'9"). Crossover behind stage through Art Room. 2 portable access treads at front of stage (3 steps). Steeldeck staging.
- Décor: Floor green carpet with no markings; wall & pillars black; roof & arches white.
- Get-in: through hall FOH, up 6 steps, through double doors and 2 right angle turns through single door into auditorium space. Approx 25M from van loading area to stage. 0.81M (2'8") wide x 2.08M (6'10") high.
- Acoustics good.
- Blackout perfect.

- Heating by overhead gas fan-blow system (background noise when in use).
- Upright piano available. No smoke detectors
- 8 step A-frame ladder available.

Technical

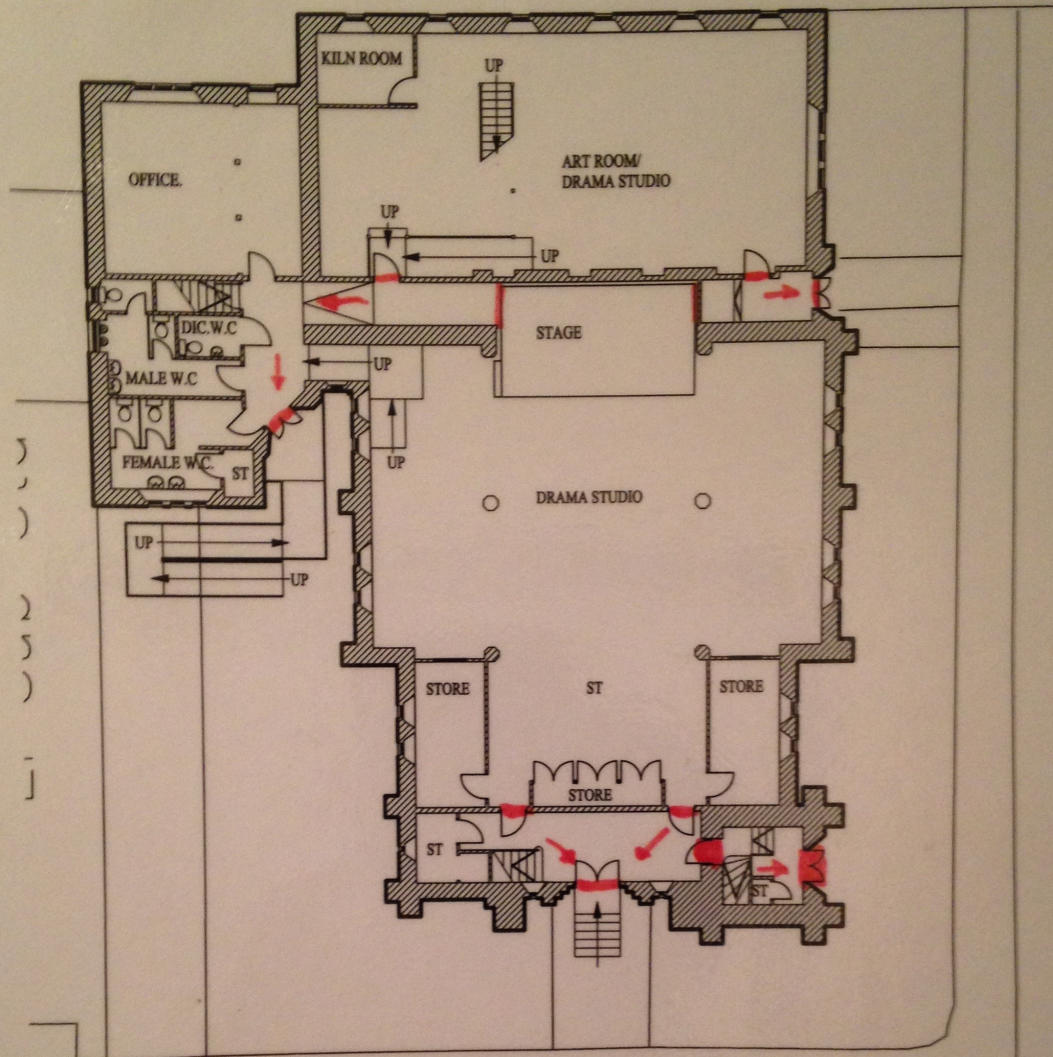
- Power: 125amp single-phase incomer located in dimmer corner adjacent to downstage right. 32amp single-phase socket here too.
- Stage lighting rig available - Strand Action 24 desk (on balcony), 2 x Act 6 patchable dimmers. FOH & Stage LX truss. 20 x Par64, 4 x 650w fresnels, 10 x 500w Coda floods, 8 x Par56 floorcans. Additional lighting can be brought in.
- Concert PA available – range of Soundcraft or Midas analogue mixers & Yamaha LS9 digital mixer, EV Deltamax full range speaker system, monitors available Crown Macrotech amps. Range of Shure, Sennheiser & AKG mics & stands, 8 DI boxes. See website for full details.
- Epson 7000 Projector & 16' x 9' screen available.
- Houselights are switched halogens and sodium uplighters, non-dimmable, switched from dimmer corner adjacent down stage right.

Backstage

- Dressing room space created in mezzanine above smaller hall behind stage.
- No Kitchen.
- No separate toilets.
- Bar can be arranged.







LOCATION PLAN
SCALE: 1:200

CLIENT:		
MAC-ARTS CENTRE, BRIDGE STREET, GALASHEILS, TD1 1SP		
DRAWING:	SCALE:	SCALE:
LOCATION PLAN	AS SHOWN	MAC/01/03

