

FOCHABERS PUBLIC INSTITUTE

June 2015 Mick Andrew



General Information

Address: 15 High St, Fochabers, Morayshire IV36 7EP. Tel: 01343 821325.

<http://www.morayvillagehalls.org.uk/hallhire/fochabers.html>

- Venue is at East end of High St on South side of road. Car Park at venue.
- Built 1905. *Pending substantial upgrade and alteration.*
- Capacity up to 200 if stage used, up to 150 if performing on floor. Stacking padded non-interlocking chairs.
- Mobile reception good.
- Fochabers has general store, bank & cashpoint, hotels and cafes. Petrol at Mosstodloch (2 miles). All other services in Elgin (9 miles).

Hall Details

- Hall Dimensions: 8.8M (28'10") wide x 20.85M (68'5") long with balcony overhang over last 4.8M (15'9"). Height at side walls 4.92M (16'2") rising to approx 6M (19'8") over centre.
- Stage: 6.4M (21') wide x 5.75M (18'10") deep to back tabs, 7.15M (23'6") to back wall. Wings 1.3M (4'3") both sides. Height to grid 3.8M (12'6"); height of stage 1.3M (4'3"). Crossover behind back drapes. Access treads off both sides of front of stage (8 steps), no rake.
- Décor: floor polished dark wood with Badminton Court markings; walls white; roof beige. Windows have red curtains; stage has beige/grey tabs & borders and dark blue FOH tabs.
- Get-in: good - through side fire exit, flat, straight through single door into hall. For stage up 2 steps, through double door straight onto stage. Approx 10M from van loading area to stage. Hall access 0.83M (2'9") wide x 2.35M (7'8") high; Backstage access doors 1.15M (3'9") wide x 2M (6'6") high.
- Acoustics slightly reverberant.
- Blackout reasonable – all windows have lined curtains.
- Heating by radiators.

- Upright piano in FOH room. Smoke Detectors in hall and above stage – possible to disable these.
- Large 12-step A-frame ladder & 7-step stepladder available.

Technical

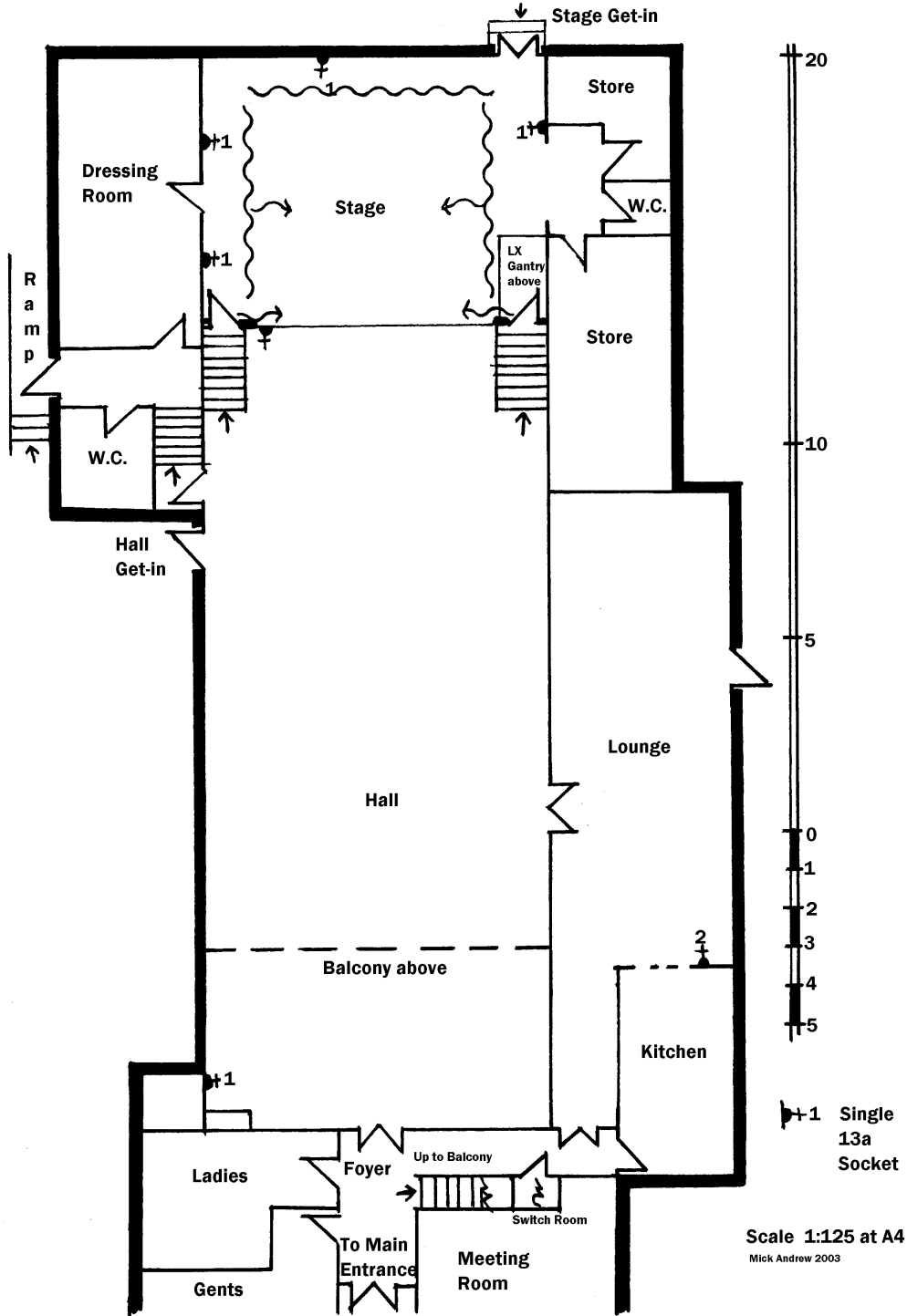
- Power: 60amp 3-phase incomer in switch room FOH. **Only 2 13amp sockets in hall and 3 on stage.**
- Small stage lighting rig – 4 Patt23 spots on 2 FOH perches (non-dim) switched from SL wing. Old Junior 8 dimmers condemned.
- No sound equipment.
- Houselights are switched fluorescents, switched at back of hall.

Backstage

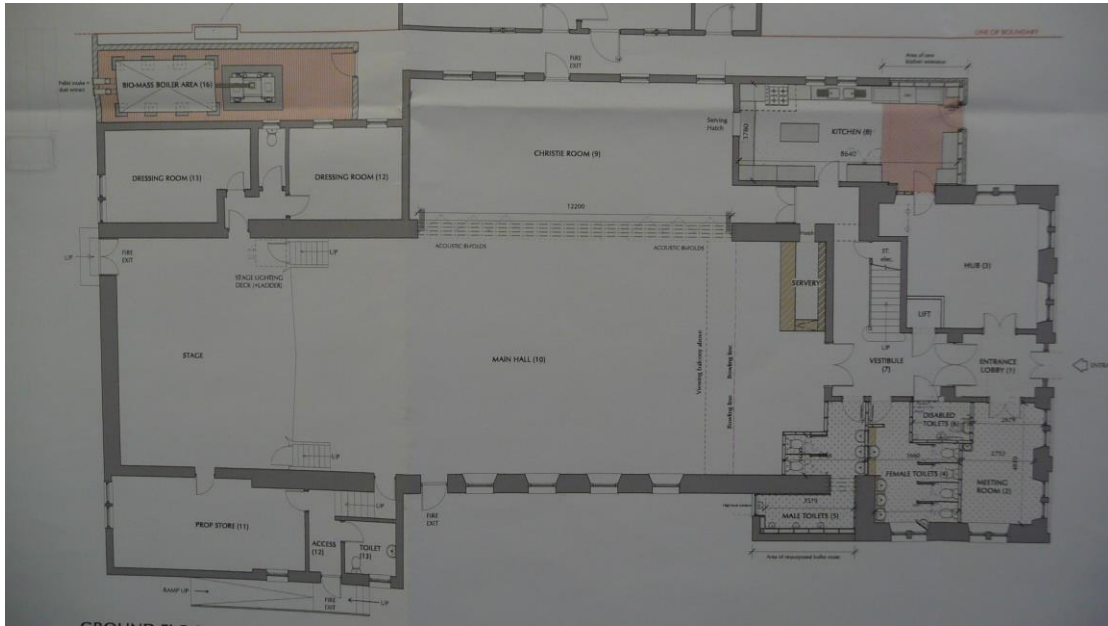
- Dressing Room adjacent to Stage Right.
- Kitchen available.
- Separate backstage toilet.



FOCHABERS Public Institute



Scale 1:125 at A4
Mick Andrew 2003



Fochabers Future Plan

